

# HESCHEL

A photograph of a school courtyard. In the background, a building entrance has a sign that reads "Shirley G. Levi" and "BEIT MIBRASH". To the left, a flagpole with an Israeli flag is visible. The courtyard features a paved walkway, a large tree in the center, and a wall on the right covered in a colorful mural of butterflies. A palm tree stands near the mural, and a patio area with a closed umbrella and chairs is on the far right. The scene is brightly lit, suggesting a sunny day.

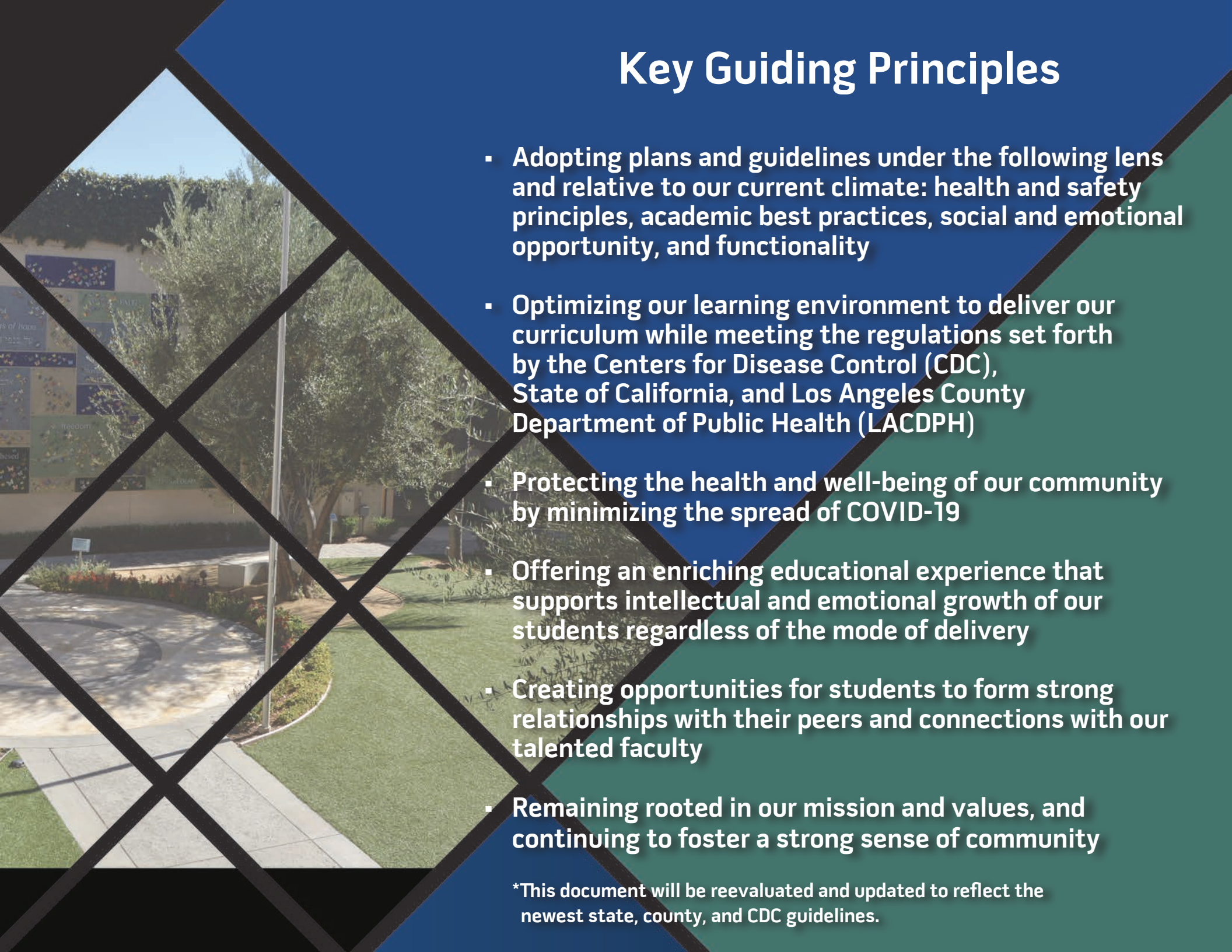
## Return to School Guidelines



# Key Guiding Principles

- Adopting plans and guidelines under the following lens and relative to our current climate: health and safety principles, academic best practices, social and emotional opportunity, and functionality
- Optimizing our learning environment to deliver our curriculum while meeting the regulations set forth by the Centers for Disease Control (CDC), State of California, and Los Angeles County Department of Public Health (LACDPH)
- Protecting the health and well-being of our community by minimizing the spread of COVID-19
- Offering an enriching educational experience that supports intellectual and emotional growth of our students regardless of the mode of delivery
- Creating opportunities for students to form strong relationships with their peers and connections with our talented faculty
- Remaining rooted in our mission and values, and continuing to foster a strong sense of community

\*This document will be reevaluated and updated to reflect the newest state, county, and CDC guidelines.



# Heschel Exposure Management Plan

Student or Faculty/Staff with:	Action	Communication
<p>COVID-19 Symptoms (such as but not limited to): Fever of <math>\geq 100.4^{\circ}\text{F}</math>, chills, cough, shortness of breath or difficulty breathing, fatigue, body or muscle aches, loss of taste or smell, sore throat, congestion or runny nose, nausea or vomiting, diarrhea, and/or rash</p> <p>*Note: Temperature of <math>\geq 100.4</math> that does not resolve within 15 minutes of cooling</p>	<ul style="list-style-type: none"> <li>Contact parent</li> <li>Send home</li> <li>Use PPE and isolate individuals until they can be picked up.</li> <li>Refer individuals to their Primary Care Physician.</li> <li>Recommend testing <ul style="list-style-type: none"> <li>If positive, see action steps below for "<i>Testing Confirms COVID-19 Case Infection (With Symptoms)</i>"</li> <li>If negative, see action steps below for "<i>Testing Results are Negative for COVID-19 (With Symptoms)</i>"</li> </ul> </li> <li>School/classroom remain open</li> <li>Begin contact tracing*</li> </ul>	<p>Contact tracing* has been conducted and the appropriate parent or guardian of the identified close contacts have been notified with proper privacy in place: "There has been a case of suspected COVID-19."</p>
Testing Confirms COVID-19 Case Infection (With or Without Symptoms)	<ul style="list-style-type: none"> <li>Notify the local public health department</li> <li>Isolate case and exclude from school</li> <li>If symptoms, must be 24 hours fever free AND symptoms improving AND at least 10 days since symptoms first started</li> <li>If no symptoms, must be at least 10 days after test confirmed diagnosis</li> <li>Recommend testing of contacts, identify symptomatic contacts.*</li> <li>Disinfection and cleaning of classroom and primary spaces where case spent significant time</li> <li>School remains open</li> </ul>	<p>Notification will be sent to all close contacts.</p>
Testing Results are Negative for COVID-19 (With Symptoms)	<ul style="list-style-type: none"> <li>With negative test on day 5 individual can return on day 7. <ul style="list-style-type: none"> <li>With no alternative diagnosis, high likelihood of false negative</li> </ul> </li> <li>If negative test and alternative diagnosis, 24 hours fever free, AND improving symptoms AND with a note from a physician stating that the individual has an alternate diagnosis and has clearance to return to school.</li> </ul>	<p>No community notification required</p>
No Testing (With Symptoms)	<ul style="list-style-type: none"> <li>Can return after 10 days if individual is 24 hours fever free AND improved symptoms.</li> <li>Note : Alternate explanation for symptoms <ul style="list-style-type: none"> <li>Alternate explanation. Return to school after 24 hours of being fever-free without the use of fever reducing medications AND with a note from a physician stating that the individual has an alternate diagnosis and has clearance to return to school.</li> </ul> </li> </ul>	<p>No community notification required</p>
Symptomatic Close Contact of Someone With Presumed or Positive COVID-19	<ul style="list-style-type: none"> <li>Send home</li> <li>Quarantine for 10 days from last exposure</li> <li>If close contact tests positive, must remain home for 10 days from when symptoms began AND 24 hours without fever. (See action steps above for <i>Testing Confirms COVID-19 Case Infection</i>)</li> <li>Must provide a negative PCR test and complete <i>Certification for Student Returning to School</i></li> </ul>	<p>Notification will be sent to all close contacts.</p>
Asymptomatic Close Contact of Someone With Presumed or Positive COVID-19	<ul style="list-style-type: none"> <li>Quarantine for 10 days from last exposure to COVID-19 positive person.</li> <li>School/classroom remain open</li> <li>If exposure is to a household member, the individual should remain home until 10 days after the COVID-19 positive household member completes their isolation. This could be a minimum of 20 days, if not more.</li> <li>If rapid testing is available, quarantine can end with two consecutive negative tests, one on the first day after exposure and one on the seventh day after exposure AND with no symptoms or recent exposure.</li> <li>If asymptomatic with a positive test, the individual can return 10 days after positive test results assuming the individual remains asymptomatic. If an individual becomes symptomatic, isolation begins as of the first day of the onset of symptoms and follows protocol for <i>Symptomatic Close Contact of Someone With Presumed or Positive COVID-19</i></li> </ul>	

\*Contact tracing by Heschel of identified or suspected cases at school will be limited to school contacts. The DPH is notified of all identified cases and DPH will utilize their own protocol for contact tracing.



## If One COVID-19 Case is Identified on Campus

- Heschel will instruct the employee/parent or guardian to consult their physician and follow COVID-19 home isolation instructions.
- Heschel will notify DPH of the confirmed case via completed line list email within one business day.
- Heschel will inform the employee/parent or guardian that the DPH will contact the case directly to collect additional information.
- Heschel will work with the employee or student/parent/guardian to identify school close contacts.
- Heschel will notify school close contacts of exposure per our policies and procedures.
- A case is considered to be infectious from 2 days before their symptoms first appeared until the time, they are no longer required to be isolated (i.e., no fever for at least 24 hours, without the use of medicine that reduce fevers AND other symptoms have improved AND at least 10 days have passed since symptoms first appeared). A person with a positive COVID-19 test but no symptoms is considered infectious from 2 days before their test was taken until 10 days after their test. A person is considered to have been exposed to a case during the infectious period if at least one of the following criteria are met:
  - Being within the same classroom as the infected person for 15 minutes or more over a 24-hour period;
  - Having had unprotected contact with the infected person's body fluids and/or secretions of a person with confirmed COVID-19 (e.g., being coughed or sneezed on, sharing utensils or saliva, or providing care without using appropriate protective equipment).
- NOTE: Exposures will be reviewed to assess which persons need quarantine including the possibility of quarantining all individuals that were in the classroom with an infected person if exposures cannot be ruled out for the entire group.

## If Two COVID-19 Cases are Identified on Campus Within a 14-day Period

- Heschel will investigate whether the two cases are epidemiologically linked, meaning that the two affected individuals were both present at some point in the same setting during the same time period while either or both were infectious.
- If epidemiological links do not exist, the school will continue with routine exposure management.
- If epidemiological links exist, the school will reinforce messages to students, faculty, and staff on precautions to take to prevent spread at the school, including implementation of site-specific interventions.

## If Three COVID-19 Cases are Identified on Campus Within a 14-day Period

- We will report the cluster to the LADPH immediately via phone or email and follow all requirements set forth by the Health Department

NOTE: Vaccinated persons who are a close contact to a confirmed case outside of their household are not required to quarantine and test for COVID-19 if they meet all of the following criteria: (1) are fully vaccinated (i.e.,  $\geq 2$  weeks following receipt of the second dose in a 2-dose COVID-19 vaccine series or  $\geq 2$  weeks following receipt of a single-dose COVID-19 vaccine) and (2) are within 3 months following receipt of the last dose in the series and (3) have remained asymptomatic since the last contact with the infected person. Vaccinated persons who are a close contact to a confirmed case within their household must quarantine 14 days beginning the date of the household member's positive test result.

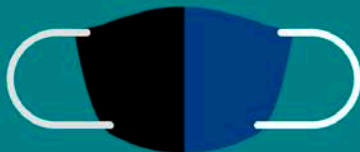
# Refrain from Coming to Campus if Sick, Symptomatic, or Exposed

## PLEASE KEEP SICK STUDENTS HOME FROM SCHOOL

- All employees, students, and individuals are instructed to not enter campus if they have COVID-19 symptoms (such as but not limited to): Fever of  $\geq 100.4^*$ , chills, cough, shortness of breath or difficulty breathing, fatigue, body or muscle aches, loss of taste or smell, sore throat, congestion or runny nose, nausea or vomiting, diarrhea, and/or rash or other symptoms associated with COVID-19 identified by the Centers for Disease Control (“CDC”). (\*Note: Temperature of  $\geq 100.4$  that does not resolve within 15 minutes of cooling.)
- In order to continue our on campus programming, we must maintain a healthy community. The expectation is for Heschel families to make good choices and adhere to all CDC, state, and county public health guidelines and recommendations as your actions outside of school will affect our students, families, and staff.
- The responsible actions of all adults and students, both on and off campus, are vital to our collective success in maintaining a safe and healthy community. The home-school partnership will require an even higher level of communication, collaboration, and understanding during this reopening period. As such, we ask that every community member practice the guidelines set forth in this document.

# Wear a Face Covering

All persons on campus are instructed to wear a clean cloth face covering or mask.



- All employees have been provided two cloth face coverings for use at work. Heschel also has a supply of face shields for use with a cloth face covering by all employees.
- All students have been provided two cloth face coverings.
- Doctors suggest changing face coverings midday and washing them after a day of wearing. Please send extra face coverings for your student when they are on campus.



- Face coverings with exhalation valves or vents, bandanas, and neck gaiters are not considered proper face coverings.
- Cloth face coverings must have two or three layers of washable tightly woven, breathable fabric. To ascertain if the fabric is tightly woven, see if it blocks light when it is held up to a bright light source.
- Face coverings must completely cover your nose and mouth and fit snugly against the sides of your face and around your nose. Face coverings that no longer cover the nose and mouth, do not stay on the face, are soiled, or have holes or tears are not acceptable and must be discarded.
- Students are prohibited from sharing or swapping face coverings.



- The guidelines for proper use of wearing a face covering can be found at <https://www.cdc.gov/coronavirus/2019-ncov/prevent-getting-sick/about-face-coverings.html> and information regarding the proper care of and cleaning of face coverings can be found at <https://www.cdc.gov/coronavirus/2019-ncov/prevent-getting-sick/how-to-wash-cloth-face-coverings.html>

- **Exemptions per CDC and CDPH include: \***

- Persons younger than two years old.
- Persons with a medical condition, mental health condition, or disability that prevents wearing a face covering. This includes persons with a medical condition for who wearing a face covering could obstruct breathing or who is unconscious, incapacitated, or otherwise unable to remove a face covering without assistance.
- Persons who are hearing impaired, or communicating with a person who is hearing impaired, where the ability to see the mouth is essential for communication.
- Persons for whom wearing a face covering would create a risk to the person related to their work, as determined by local, state, or federal regulators or workplace safety guidelines.



\*Persons with medical conditions or disabilities that prevent them from being able to wear a face covering should contact Heschel's administration so accommodations can be provided.



# Health and Safety Protocols - Students, Faculty, and Staff

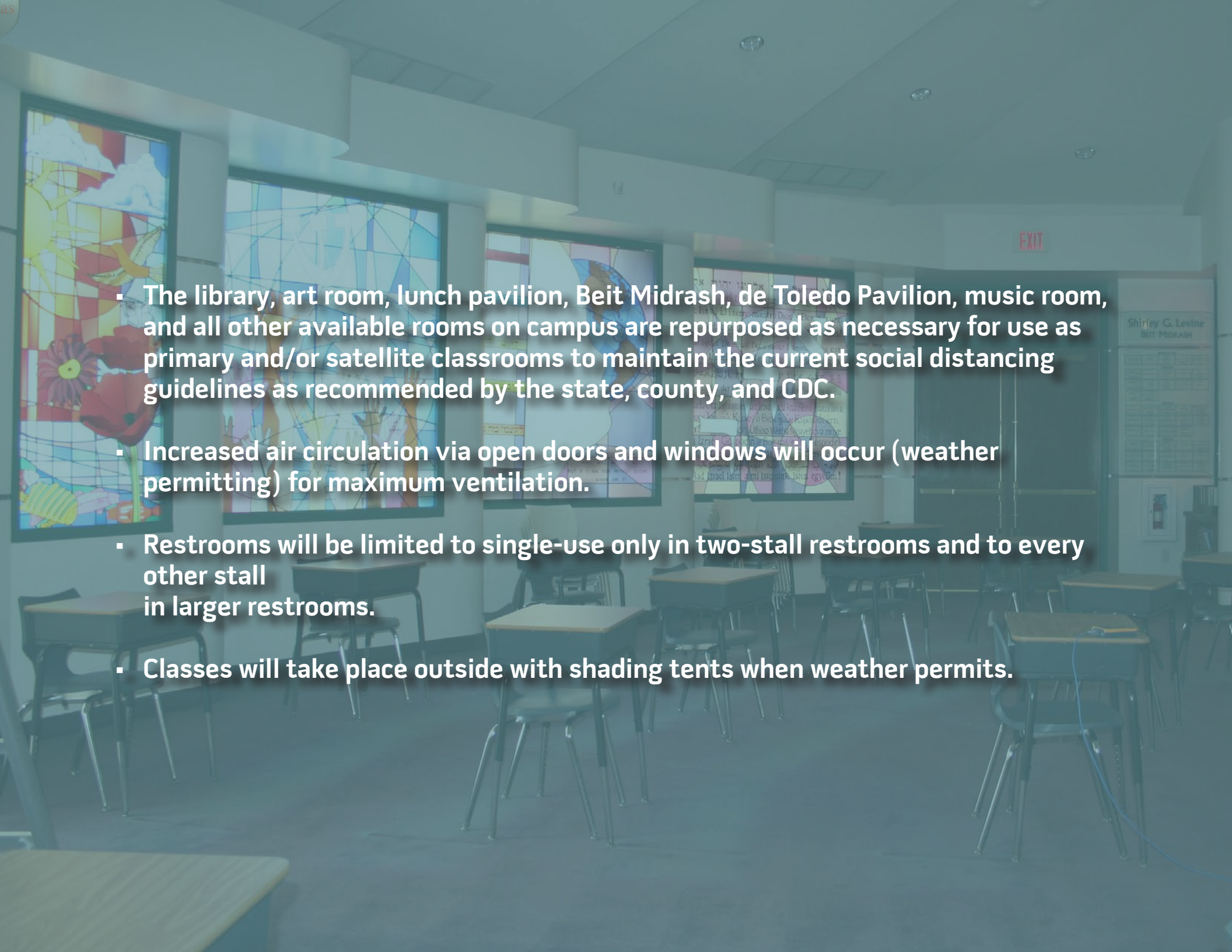
- All students, faculty, staff, and any other individual entering campus must complete a health screening using the SchoolPass app before entering campus
- Upon entering Heschel's parking lot, every individual must remain in their vehicle and. Parents and guardians must keep their face coverings on as well until exiting the parking lot.
- Students, faculty, staff, and all persons on our campus are instructed to wash hands before/when entering a classroom or office upon arrival on campus, before and after eating, and as part of their daily schedule (no more than 120 minutes between hand washings).
- Teachers will consistently reinforce proper hygiene techniques.
- Sanitizer stations have been placed throughout campus.
- The school will conduct testing every week of all students, faculty, and staff to maintain regular surveillance of Covid in the school.



# Health and Safety Protocols - Facilities

- Signage is placed at our campus entrances, in every classroom, in restrooms, and all throughout our campus with CDC handwashing guidelines, germ spread mitigation guidelines, social distancing guidelines, and face covering reminders.
- Signage is placed at all drinking fountains on campus to identify its use as a water filling station and not for direct drinking.
- Desks are spaced apart, often facing the same direction, and the teacher will instruct from the front of the class an appropriate distance from the students.
- Teachers are encouraged to implement strategies for classroom discussion and turning in assignments that minimize contact but encourage engagement and participation. Teachers should develop practices that promote physical distancing but also permit students to have movement.
- Teachers will remind students to keep their personal belongings separate, to not share their personal belongings with other students, and to take their personal belongings home each day for cleaning. Teachers have enough supplies to minimize the sharing of high-touch materials to the extent possible.



- 
- The library, art room, lunch pavilion, Beit Midrash, de Toledo Pavilion, music room, and all other available rooms on campus are repurposed as necessary for use as primary and/or satellite classrooms to maintain the current social distancing guidelines as recommended by the state, county, and CDC.
  - Increased air circulation via open doors and windows will occur (weather permitting) for maximum ventilation.
  - Restrooms will be limited to single-use only in two-stall restrooms and to every other stall in larger restrooms.
  - Classes will take place outside with shading tents when weather permits.

# Cleaning and Disinfection

- To ensure a clean and sanitary campus environment for students and staff, Heschel is following the CDC, state, and county cleaning and disinfection guidelines. Our protocol includes:
- Utilizing products listed by the United States Environmental Protection Agency and in accordance to the CDC guidelines (including storing products securely away from children) use against COVID-19.
- Access to hand sanitizer is present at our campus entrance point, classrooms, main and academic office entrances, and throughout campus.
- Procedures are in place and faculty and staff are trained in disinfecting protocols.
- Faculty and staff are instructed to disinfect desks and classrooms before exiting, after each class, and before turning over the classroom to another teacher or group of students.







## Health Center and Safety Protocols

- Students who visit the Health Center for routine medical assistance will be directed to the Health Center Well Room.
- Students who require basic first aid during PE, recess, or any other time while on the yard will be directed to the PE office for care. If additional support is needed, students will be routed to the Health Center Well Room.
- Anyone who exhibits COVID-19 health screening symptoms (at any time during the school day) will be directed to a pop-up isolation space or to the Health Center Isolation Space, a stand-alone air conditioned/heated unit housed in the Heschel parking lot. (Pictured here)
- If any member of your household is a confirmed or presumed positive COVID-19 case, the remaining household members will be asked to remain off campus until a minimum of 10 days has passed following the discontinuation of their isolation period.

# "DO's and "DON'T's of Physical Distancing on Campus

**DO wave and say hello.**

**DO wear a face covering while on campus, including in classrooms, and shared outdoor areas.**

**DO maintain social distancing at all times to the extent practical and consistent with the health and safety needs of our students, faculty, and staff.**

**DO ask yourself, "Can I accomplish this task with an email, phone call, or videoconference?"**

**DO wipe down anything you touch with the disinfectant products provided.**

**DO set a good example by consistently following Heschel's policies and protocols on frequent handwashing, physical distancing guidelines, wearing face coverings, and other COVID-19 precautions.**

**DO remember that we are one community and decisions made by families outside of school affect all of Heschel.**

**DO use hand sanitizer when soap and water are not available.**

**DO consider ways to promote healthy hygiene practices and build routines to enforce physical distancing measures.**

**DON'T shake hands, fist bump, or hug.**

**DON'T wear a face covering that is no longer in good condition.**

**DON'T plan, schedule, or implement activities where physical distancing cannot be adhered to.**

**DON'T have in-person meetings unless you really must do so.**

**DON'T rely on others to do it for you. All wipe downs should be completed before you leave a given classroom or space so they are clean and ready for the next inhabitants.**

**DON'T think that it is okay not to follow a policy "just this once."**

**DON'T forget your decisions affect us all.**



# Travel Policy

In addition to daily self-screening and temperature checks, and as recommended by the State, County, and CDC, we encourage faculty, staff, and families to avoid non-essential travel and check the CDC Travelers Health Notices and Guidance prior to travel. For those that travel, the following applies:

Travelers who are fully vaccinated, (two weeks have passed after their second dose for Pfizer or Moderna, or after their single dose of Johnson & Johnson) can now travel and will not be required to test or quarantine upon their arrival in Los Angeles County if they do not have any symptoms of illness. After traveling, self-monitor for COVID-19 symptoms; isolate and get tested if symptoms develop. With international travel, a viral test 3-5 days post-travel is recommended.

Travelers who are not fully vaccinated arriving in or returning to California from other states or countries must quarantine as described below.

- Quarantine for 7 full days after travel if they get tested and get a negative COVID-19 viral test result from a specimen collected 3-5 days after their arrival.
- Quarantine for 10 full days after travel if they do not get tested with a COVID-19 viral test after their arrival.
- Travelers should continue to self-monitor for symptoms of COVID-19 For 14 days after their arrival and avoid being around people who are at increased risk for severe illness. They must isolate and get tested if symptoms develop.

According to the CDC, the following activities and situations can increase your risk of exposure to COVID-19: (<https://www.cdc.gov/coronavirus/2019-ncov/travelers/travel-during-covid19.html>)

- Being in an area that is experiencing high levels of COVID-19, including destinations with a Level 3 Travel Health Notice. You can check the Travel Health Notices for recommendations for places you have traveled, including foreign countries and U.S. territories. You can also check states, counties, and cities to determine if these areas are experiencing high levels of COVID-19.
- Going to a large social gathering like a wedding, funeral, or party.
- Attending a mass gathering like a sporting event, concert, or parade.
- Taking public transportation like planes, trains, or buses, or being in transportation hubs like airports.
- Being in crowds, for example, in restaurants, bars, airports, bus and train stations, or movie theaters.
- Traveling on a cruise ship or river boat.

# Staggered Arrival and Dismissal Procedures

- Heschel has established two (2) entry and exit points to the school's campus to promote physical distancing. The entry and exit points are be the Breezeway and White Oak Gates.

## Arrival:

- Staggered arrival and drop off-times and locations will be utilized daily to minimize contact and exposure opportunities at the beginning and end of the school day.
- SchoolPass Wellness Checks should be conducted for each student before pulling into the arrival line to promote speedy procedure.
- All students must wait to exit the vehicle until a temperature check has been completed. All car-riders are expected to wear a face covering throughout arrival and dismissal procedures.
- Elementary School Students who are in TK/K will arrive at 8:10 - 8:25 a.m. If you are a family with students who fall within different arrival times, please drop off students at the earliest time slot assigned.
- Absences and tardies will be managed via the SchoolPass app.
- Please remember to be considerate to our neighbors!

## Dismissal:

- No parents/guardians/drivers will be permitted to exit their vehicles.
- Students will stay with their groups until they are called to dismissal.
- Parents must communicate with administration to ensure any individuals who will pick up your student are approved prior to dismissal time.



# Visitor Policy

- No visitors will be permitted on campus. This includes parents.

# Large Gatherings

- All assemblies, meetings, school-wide celebrations, school dances, plays, community events, and holiday celebrations on campus will not take place in-person and will be reimagined to account for COVID-19.
- Swivl and Zoom will be used so multiple grades can see each other “virtually” while on campus to connect and create community.
- Activities where there is increased likelihood for transmission from contaminated exhaled droplets such as band and other choir practice and performances are not permitted.

# Eating on Campus

- Students, faculty, and staff should bring their own food, utensils, and water bottles.
- Students will eat with their own small stable groups.
- Lunch time will be staggered and take place outside, weather and air quality permitting.
- Physical distancing guidelines will be maintained during eating.
- Our hot lunch program will not be offered until further notice.

# Student Travel Programs

- Our experiential learning opportunities will continue but will be fostered through online platforms. Certain field trips and social action programs may take place so long as COVID guidelines permit the activity.

# Music

- All in-person group singing will be limited to reduce the risk for COVID-19 transmission due to the larger numbers of respiratory droplets singing produces.

# Physical Education

- Outdoor physical education or play activities will be staggered for different student groups and limited to an assigned area. Students will be directed to maintain physical distance to the greatest extent possible.
- Teachers will be tasked with supervising their student group within their designated area during outdoor physical education or play activities.
- PE staff have developed instructions for developmentally appropriate physically distanced outdoor activities.
- Each student will have their own PE kit with athletic supplies to prevent sharing of balls, mats, and other equipment.
- Students will focus on physical fitness, well-being, outdoor play, and skills development using outdoor facilities.
- The locker room will not be in use until further notice.
- Direct competition and drills that require close contact will not be permitted.
- The limited shared equipment available will be cleaned and disinfected between users.
- Rainy day PE activities will take place in the classrooms.

